

daab



USER MANUAL

daab

With daab™, you're in control: The cleanest, safest dabbing experience

**Welcome to the dabbing revolution.** daab™ provides a sleek, induction-heated, handheld rig for the perfect hit, every time. Discreet & portable, this induction device promises the most clean, even-heated hit for repeatable, controllable dabs anywhere, at any temp. .

This safe, easy, clean and reliable dabbing experience by daab™ features patent-pending carrier cup and all-glass airflow path, for the best flavor & customized temp. control. Our borosilicate glass cups heat to the precise degree between 250° and 800°F, for both tasty "cold start" dabs and high-temp hits for bigger clouds -- without contacting heavy metals or solvents that can contaminate your product. daab is rechargeable, with a pass-through function allowing for use during charging.

**INDUCTION + PATENT-PENDING BOROSILICATE CUPS**

Ispire brought the magic of induction to bring the "induced" heat! By circulating electrical currents only between the activated metal (encased in the glass cup), we avoid the headaches that dabbers experience when using open-flame torch dabs; Burn hazards, maintaining butane supplies, "chazzing" (burning/staining) expensive bangers, or guessing how hot their dabs is.

**Why is this a more "clean dab environment"?** Since heat is only transferred via electromagnetic waves between the cup & the inductor, and nothing else, your oil remains contaminant-free, avoiding contact with toxic substances, open flame or metal. While typical torches heat the entire glass banger until it's red-hot and way over the desired temperature, dabbers have to either wait for it to cool, take too hot a dab, or guess at the temp.

daab solves this altogether by skipping the flame, and only conducting heat to the ferrous metal encased between the 2 sealed borosilicate glass walls -- separating any metal from the dab itself with the inner cup nested inside the all-glass carrier cup. The metal is only activated via induction when the **Fire button** is pressed 2x, activating "Auto Heat Mode."

**KIT CONTENTS**

- daab Device x 1
- Water Chamber /Carrier Cup x 1
- Dab pad x 1
- Reclaim Cup x 1



- Carb Cap x 1
- Inner Cup x 2
- USB Cable x 1
- Heat Resistant Silicone Ring x 1



- User Manual x 1
- Dab Tool x 1
- Alcohol Swab x 3
- Alcohol Pad x 2
- Water Chamber Silicone Bumper x 1



**STEP-BY-STEP ASSEMBLY**

1. Fill water chamber through the mouthpiece to the fill line.



2. Assembly order.

- ① Reclaim cup ② Inner Cup ③ Water chamber
- ④ Carburetor "carb" cap (Just like a carburetor controls a car engine's air flow & pressure, your carb cap controls the airflow & pressure of your dab)



**STEP-BY-STEP USAGE**

1. **Assemble daab components:** Insert inner cup into carrier cup, and pour water to fill line, using the chamber mouthpiece



3. **Set temp:** Use +/- buttons for the ideal temp for your concentrate type (Start low, in the 400-500°F range)



- **Low** - 250-450°F
- **Medium** - 451-600°F
- **Hot** - 601-800°F

**STEP-BY-STEP USAGE**

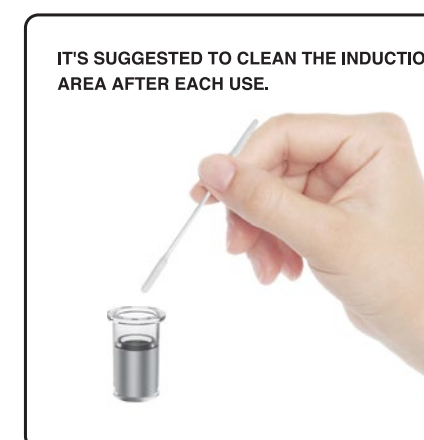
4. **Activate:** Press Fire button 2 x quickly to Auto Heat. Press once to stop Auto Mode.



6. **Enjoy:** Start inhaling from anytime while it's heating. Cover carrier cup with provided glass carb. cap for bigger, milkier, denser hits. Inhale gently, to avoid sucking oil into the glass chamber

**STEP-BY-STEP USAGE**

7. **Want to sesh again,** within 3 minutes of the last? Engage "Manual Reheat Mode" by long-holding the fire button for 15 sec to reheat reclaimed oil properly. Engaging Auto Heat Mode while the inner cup's still hot can overheat oil. Use the additional cup provided in the kit while you allow the used cup cool (on a heat-resistant surface) before cleaning/reusing.



IT'S SUGGESTED TO CLEAN THE INDUCTION AREA AFTER EACH USE.

Ispire  
www.getispire.com

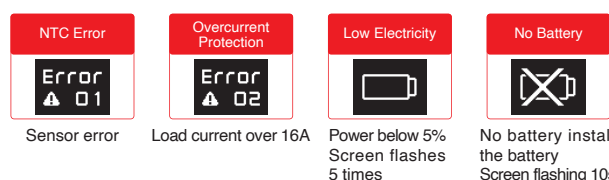
**SCREEN INDICATOR**



Screen



Charging indicator



Pressing the FIRE button without a bowl/banger inserted into the induction area will cause the LED indicator flash red

The device is too hot to operate. Please wait 5 minutes to let the device cool



To turn the beep sound on/off. Press the FIRE button and the plus button at the same time for 3 seconds: After 3 seconds if the screen shows an image of a speaker and beeps once the beep sound is on. After 3 seconds if the screen shows an image of a speaker with an X next to it and beeps twice then the beep sound is off.

**FUNCTIONALITY LAYOUT**



**LED Indicator**

- Warning
- Heating Mode

**FIRE Button**

On/Off: Press 5 times quickly to power the device ON/OFF. Auto Heat Mode: To sesh, press 2 times quickly to activate; Press once to stop Auto Mode. Manual Reheat Mode: Press & hold for 15 seconds to re-heat any reclaimed oil.

**Plus Button**

Press (+) to increase temperature.

**Minus Button**

Press (-) to decrease temperature.

**OLED Screen**

Temperature: 450 F (250-800°F)



**+/- Buttons**

Change between Fahrenheit & Celsius by pressing BOTH the + and - buttons at the same time for 1 sec.

**Fire Button & "+" Button**

To turn the beep sound ON/OFF, press BOTH the Fire button and "+" button at the same time, for 3 secs. Sound is on when it beeps once, and the screen shows a speaker icon. Sound is off when it beeps twice and the screen shows an "X" next to the speaker image.

**PROTECTIVE MEASURE**

Water chamber silicone bumper. Install water chamber silicone bumper as shown.



2. Reclaim cup heat resistant silicone ring. Install the heat resistant silicone ring as shown.



**BATTERY RECOMMENDATION**

**Battery performance:** As with any high performance device, high performance fuel is required. The daab™ uses high performance batteries that can be depleted quickly, depending on usage. When using higher temp settings, the number of heating cycles will lessen. Keeping batteries charged between sessions, or during a session is suggested.

daab™ has a "pass-through" allowing it to be used while charging.

Recommended batteries: 18650 3000mAh-3500mAh 30A (min. 15A CDR rating).

**SAFETY INFORMATION**

**USE SENSIBLY:** Read the User Manual fully BEFORE operating Ispire Induction daab™. Improper operation can lead to damaging the unit, voiding the warranty, and possible harm to the user. ISPIRE INDUCTION daab™ DEVICES ARE NOT E.N.D.S. DEVICES AND NOT INTENDED FOR USE WITH NICOTINE CONTAINING SUBSTANCES. THIS PRODUCT IS AN AROMA-THERAPY DIFFUSER DESIGNED TO VAPORIZE HERBAL MATERIALS, CONCENTRATES, ESSENTIAL OILS AND AROMATIC TERPENES AT LOW TEMP. ISPIRE INDUCTION daab™ DEVICES ARE NOT INTENDED FOR USE BY MINORS, INDIVIDUALS WITH RESPIRATORY ILLNESSES, CHRONIC PULMONARY CONDITIONS, ANYONE ALLERGIC TO ESSENTIAL OILS OR PREGNANT/NURSING WOMEN. ISPIRE INDUCTION daab™ DEVICES ARE NOT INTENDED TO DIAGNOSE, TREAT, CURE OR PREVENT ANY DISEASE. ISPIRE INDUCTION daab™ DEVICES HAVE NOT BEEN EVALUATED BY THE FDA.

**Induction Warning:** Do not place any foreign metallic objects in the Induction Area. Induction heating systems will heat ANY CONDUCTIVE materials placed inside the electromagnetic fields. Use ceramic or glass loading tools when the daab™ is in operation. The daab™'s precise temperature control accuracy is dependent on the condition that the device is fully charged at room temperature with at least +/-60F temperature accuracy tolerance value.

**Seizure Warning:** A very small percentage of individuals may experience epileptic seizures or blackouts when exposed to certain light patterns or flashing lights. These conditions may trigger previously undetected epileptic symptoms or seizures in persons who have no history of prior seizures or epilepsy. If you, or anyone in your family has an epileptic condition or has had seizures of any kind, consult your physician before using.

Questions?  
Contact us: [www.getispire.com/support](http://www.getispire.com/support)

SHENZHEN EIGATE TECHNOLOGY CO., LTD.  
Floor 1-4, Building 3, No.14 Jian'an Road, Shajing Sub-district, Bao'an District, Shenzhen, Guangdong Province, China  
Tel: +86-755-8149-9783

Designed in California  
Made in China  
Manufactured by Eigate

