

# VISTA MINI 2

## INSTRUCTION MANUAL


©  
XVAPE

### SHARE THE VIEW:

Take a video using the product with **#XVAPE** and we will share it with our global family.

 @XVAPE\_VAPORIZER

 @XVAPEVAPORIZER

 @XVAPE\_VAPORIZER

### BATTERY HEALTH NOTE

**PLEASE DO NOT PUT THIS PRODUCT AWAY OR LEAVE IT FOR EXTENDED PERIODS OF TIME WITH A LOW CHARGE. IF THE BATTERY FALLS BELOW 2% AND IS LEFT THAT WAY THEN IT WILL NO LONGER ACCEPT A CHARGE.**

### DISCLAIMER

Thank you for purchasing the XVAPE VISTA MINI 2. To ensure the best experience, please read and understand the instructions fully before your first use of the XVAPE VISTA MINI 2. We strongly recommend you keep these instructions for future reference.

We hope you enjoy the excellent quality and performance of your new XVAPE VISTA MINI 2.

User must be of legal age within any given jurisdiction to purchase or use the XVAPE VISTA MINI 2, use this product in moderation. This product should not be used by a child, while driving or operating heavy machinery, minors, or women who are pregnant and/or breast feeding and those with life threatening illnesses without first consulting a doctor.

1

California Prop 65 WARNING: This product contains chemicals known by the state of California to cause cancer birth defects or other reproductive toxicity. The vaporized aerosol of chemicals are known to cause respiratory or other diseases and in some cases are irreversible. If needed contact your local poison control center, USA: AAPCC 1-800-222-1222.

Note that the xvae vista mini 2 is not a medical device and is not intended to administer medicinal or illegal substances of any kind, diagnose, cure, treat or prevent any diseases or other conditions.

Any illegal use of this device could subject the user to severe fines, penalties and/or imprisonment under the law of their (and/or other) jurisdictions.

THIS PRODUCT DOES NOT CONTAIN ANY BOTANICAL CONCENTRATE MATERIAL.

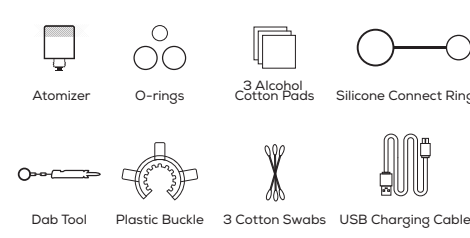
2

### XVAPE VISTA MINI 2 OVERVIEW



3

### XVAPE VISTA MINI 2 CONTENTS



### SPECIFICATIONS

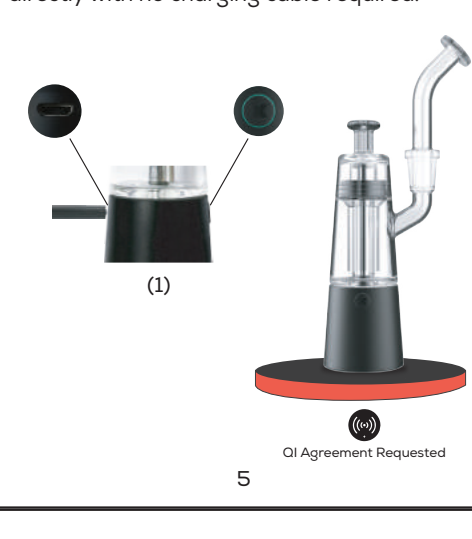
Battery Capacity	2000mAh(Lithium-Polymer)
Charging Voltage/Current	5V/500mA
Working Voltage	3.3-4.2V
On/Off	Click the button 3 times consecutively
Temperature Change	Click the button 2 times consecutively
Battery Low	Power button light flashes 10 times rapidly
Heating	Quartz
Size	48*48*145.8mm(1.89*1.89*5.74inch)
Time for Each Click	35 seconds
Short Circuit Protection	Power button light flashes 5 times rapidly
Capacity of the Heating Oven	130ML
Temperature Settings	4 temperature settings

4

### OPERATION GUIDE

#### 1. Charge

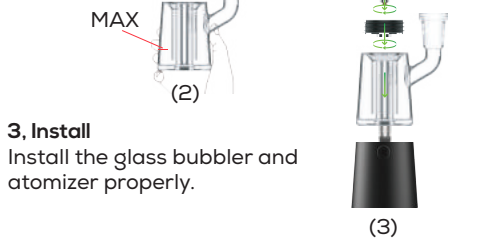
Fully charge device before first use. Please use the provided USB cable to charge your device. Device power light flashes while charging, and turns off automatically when fully charged. You can also use your wireless charger to charge the device. Please put your device on the wireless charging base (not included) directly with no charging cable required.



5

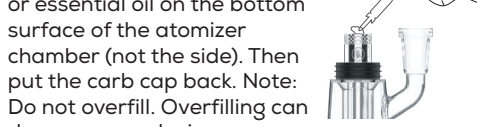
#### 2. Fill the Glass Bubbler

Fill glass with water no more than the red line. Do not fill glass while attached to base. Note: Water will damage battery base. Do not overfill glass.



#### 3. Install

Install the glass bubbler and atomizer properly.



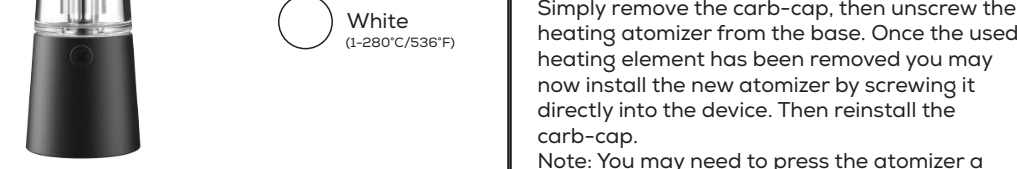
#### 4. Load

Use the dab tool to place a small amount of concentrate or essential oil on the bottom surface of the atomizer chamber (not the side). Then put the carb cap back. Note: Do not overfill. Overfilling can damage your device.



#### 5. Power On/Off

Click the power button 3 times in quick succession to turn on. The LED light will flash 5 times and the device will vibrate to indicate the device is on. There is an indicator light for battery power that illuminates when the unit is on.



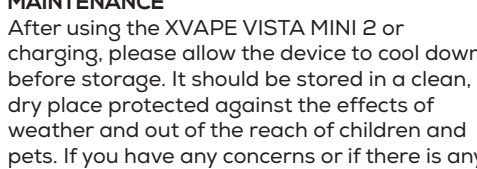
#### 6. Heating and Inhale

Click the power button once to start. The corresponding temperature lights will flash indicates heat-up. Device will vibrate when ready to inhale for a 35 seconds session. Once session is complete if desired, the button can be pressed again to increase the use for an additional 35 seconds. The XVAPE VISTA MINI 2 will automatically turn off if not used for 2 minutes. Note: Inhaling gently will produce the best results.



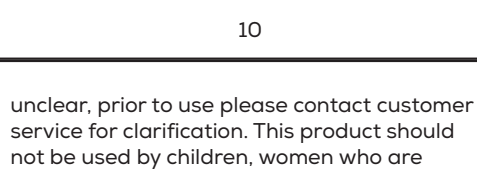
#### 7. Temperature Settings

The XVAPE VISTA MINI 2 has 4 temperature settings. Click the power button twice to toggle through temperature settings.



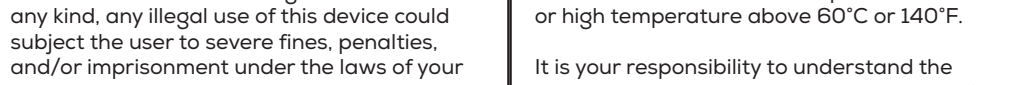
#### 8. Clean

Use a cotton swab to clean the heating atomizer chamber after each use. Once clean allow to air dry or dry off with a soft cloth or towel.



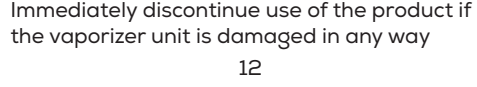
#### 9. Atomizer Replace

Simply remove the carb-cap, then unscrew the heating atomizer from the base. Once the used heating element has been removed you may now install the new atomizer by screwing it directly into the device. Then reinstall the carb-cap. Note: You may need to press the atomizer a little bit when installing the new coil, because both the battery and coil use a spring thread.



#### 10. MAINTENANCE

After using the XVAPE VISTA MINI 2 or charging, please allow the device to cool down before storage. It should be stored in a clean, dry place protected against the effects of weather and out of the reach of children and pets. If you have any concerns or if there is any problem, please switch off the XVAPE VISTA MINI 2 and or remove it from the charger immediately. Do not try to remedy any defect yourself. Contact our customer service directly at support@xvapeusa.com



#### 11. WARNING

**DO NOT TOUCH THE HEATING ELEMENT IMMEDIATELY AFTER USE. DO NOT SUBMERGE OR CLEAN BATTERY WITH WATER OR ISOPROPYL ALCOHOL. ALWAYS DETACH THE XVAPE VISTA MINI 2 HEATING ELEMENT FROM BATTERY PRIOR TO CLEANING.**

#### 12. SAFETY

Prior to your first use, please read and fully understand the instructions including the safety information. We recommend that these instructions be kept for future reference. Failure to follow warnings may result in a safety hazard including electric shock, fire, property damage, bodily injury, or death.

#### 13. AGE

You must be of legal age in your jurisdiction to purchase or use the XVAPE VISTA MINI 2 for adult use only.

#### 14. USE

Never use the product before reviewing the manual in its entirety. If any section or topic is



#### 15. unclear, prior to use please contact customer service for clarification. This product should not be used by children, women who are pregnant or breast feeding, or those with life threatening illnesses without first consulting a doctor. It is recommended that all users consult a doctor prior to use with your chosen herb or concentrate. Note that the XVAPE VISTA MINI 2 is not a medical device and is not intended to diagnose, cure, treat, prevent any diseases, or other medical conditions. The XVAPE VISTA MINI 2 is not intended to administer medicinal or illegal substances of any kind, any illegal use of this device could subject the user to severe fines, penalties, and/or imprisonment under the laws of your local jurisdiction.

If the device or battery begins to feel abnormally hot, immediately discontinue use and turn off unit. Allow device to cool in a safe, non-flammable environment. Do not approach device for at least 2 hours. Do not attempt to repair product on your own.

#### 16. DAMAGE

Immediately discontinue use of the product if the vaporizer unit is damaged in any way

including but not limited to: dents, overheating, unusually restrictive airflow, and/or electrical malfunctions. Do not attempt to repair product by disassembly of non-replaceable parts except Mouthpiece heating element, Packing Tool, Removable Battery. Please contact customer service for help with any damaged unit.

All Batteries may explode or burst into flame if used improperly or mistreated Do not disassemble, puncture tamper, cut, crush, short-circuit, incinerate or expose to water, fire or high temperature above 60°C or 140°F.

It is your responsibility to understand the dangers as well as the proper procedures for handling all batteries. Do not dispose of in trash containers nor litter the environment.

Please recycle or dispose according to local safety regulations law. (Suggested to cover terminals with proper insulating tape before disposal.)

#### 17. WARNING

**THIS PRODUCT IS NOT INTENDED FOR NICOTINE. PRODUCT IS DESIGNED FOR**

scratches/chips to finish and/or broken plastic parts.

Normal product wear and tear is not covered under warranty. Normal performance degradation of batteries is also not covered by the warranty.

To make a warranty claim, please contact customer support at support@xvapeusa.com. The original bill of sale, authenticity code, pictures or videos, and any serial numbers are required to redeem the warranty.

At the manufacturer's discretion, warranty service will be provided by repair of the product or exchange of the product and or part with a new or functionally equivalent product/part.

#### 18. CUSTOMER SUPPORT

For any question or concerns with the product, it's use, or defects, please contact customer support at support@xvapeusa.com. We will do our best to provide a response within two(2) business days after receipt of written notice.

This warranty covers only the electronic base. This warranty does not warrant glass, atomizers, and damage caused by accident, abuse, misuse, natural disaster, user error, or use outside the intended use described in the manual. Use outside the intended use as described in this manual also includes any tampering with device in any way including but not limited to modification to alter functionality or modification to alter appearance.

The warranty also does not apply to cosmetic damage including but not limited to dents,

14

15