

XVAPE FOG MANUAL

Caution

1. Please do not put this product away or leave it for extended periods of time with low charge because if the battery falls below 2% then it will no longer accept a charge.
2. Charge the battery with a good quality & dedicated charger. Never more than 5V/1A. Otherwise, it will cause damage to battery, serious personal injury, fire.



3. Do NOT use damaged batteries in all our vaporizers
4. Please use our original batteries or high quality batteries from authentic brands instead of clones
5. Always use battery suitable for your device. Never carry it loose in your pocket with other metal objects.



Do not over load the device chamber with desired materials, for devices with variable temperature settings please find the best setting that is comfortable and safe for your enjoyment.

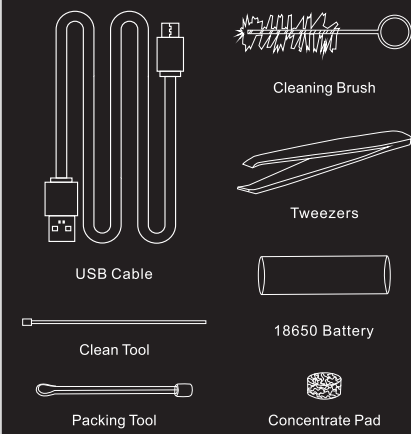
CONGRATULATIONS:

Thank you for purchasing the XVAPE FOG. To ensure the best experience, prior to your first use, please read and fully understand the instructions. We strongly recommend these instructions be kept for future reference.

KEY FEATURES

- Removable/Replaceable 18650 battery
- True Convection (Fast air-heating)
- Micro USB Charging
- Jewelry Grade Ceramic Mouthpiece

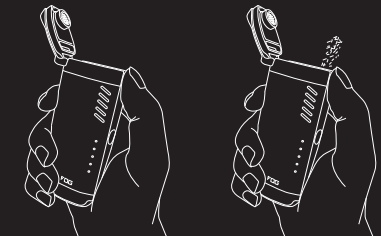
CONTENTS



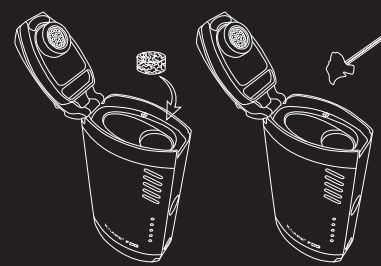
1. LOAD

To load dry herb into the fog, flip open top cap to expose the heating chamber, pack in botanical material and close the lid. Note that the tighter the chamber is packed the more draw resistance will be experienced.

If overpacked the XVAPE FOG won't have good airflow.

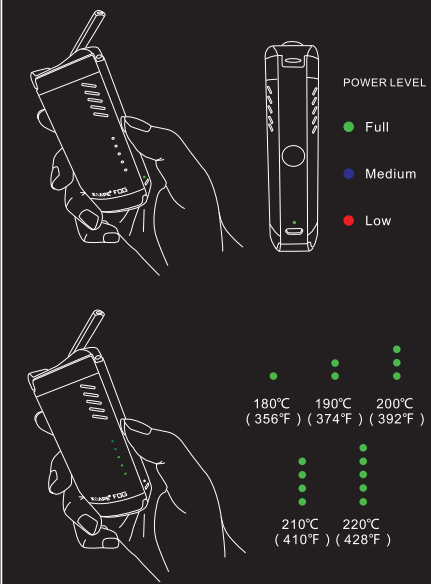


To load concentrate into the fog, flip open top cap to expose the heating chamber, place concentrate pad into heating chamber, place concentrate on pad and close the lid.



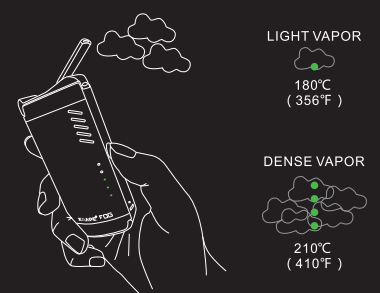
2. TURN ON AND ADJUST

To turn the vaporizer on, press the power button 3 times. When the unit is on, the micro USB port will glow indicating the battery level. To toggle between heat settings, press and hold the power button. The LED lights on the side of the unit will light up as temperature increases.



3. OPERATE

To operate the vaporizer simply draw steadily and deeply through the mouthpiece. The unit will auto shut off in 4 minutes from when turned on. If you are done vaporizing earlier than the auto shut off, simply click the power button 3 times to turn off.



4. UNLOAD

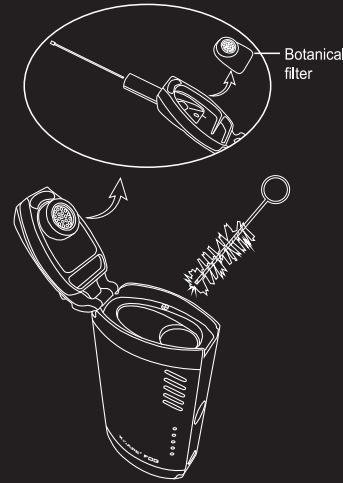
To unload dry herb from the FOG, flip open top cap to expose the heating chamber, pick out vaped material with included packing tool and close the lid.

To unload concentrate from the FOG, flip open top cap to expose the heating chamber, pull out concentrate pad with included tweezers and close the lid. Note if the concentrate pad is too sticky to remove, turn on unit and heat up chamber before removing (CAUTION: THE PAD WILL BE HOT).

5. CLEANING

For the best performance, the FOG should be regularly cleaned. To clean the fog, open the lid to expose the heating chamber, ensure device is unloaded, and wipe inside of chamber with isopropyl alcohol moistened cotton swab. Wipe remaining surfaces of the fog with an alcohol wipe.

Occasionally for a deep cleaning, the botanical filter assembly and concentrate pad can be soaked in alcohol.

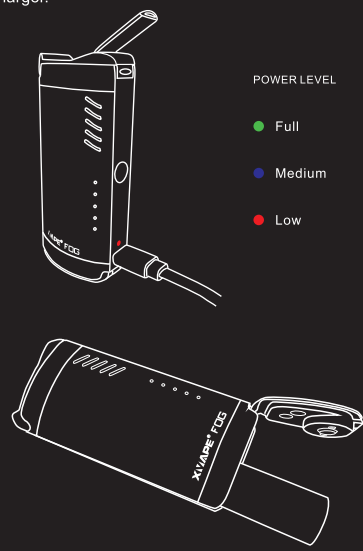


After cleaning please allow all parts to dry completely prior to use. During cleaning, do not allow any fluids to seep into bottom of heating chamber.

6. CHARGE

Prior to first use, fully charge the vaporizer unit by leaving unit plugged in for 6 hours. After the initial charge, please do not overcharge the unit by more than 3 hours. See diagram below for location of charging indicator.

The FOG battery may also be charged with an external charger (not included). Simply open the battery door to remove battery and follow instructions of the external charger.



7. SAFETY

Prior to your first use, please read and fully understand the instructions including the safety information. We recommend that these instructions be kept for future reference.

Failure to follow warnings may result in a safety hazard including electric shock, fire, property damage, bodily injury or death.

AGE

You must be of legal age in your jurisdiction to purchase or use the XVAPE FOG. For adult use only.

USE

Never use the product before reviewing the manual in its entirety. If any section or topic is unclear, prior to use, please contact customer service for clarification.

This product should not be used by children, women who are pregnant or breast feeding, or those with life threatening illnesses without first consulting a doctor. It is recommended that all users consult a doctor prior to use with your chosen herb or concentrate. Note that the XVAPE FOG is not a medical device and is not intended to diagnose, cure, treat, prevent any diseases or other medical conditions. XVAPE FOG is not intended to administer medicinal or illegal substances of any kind. Any illegal use of this device could subject the user to severe fines, penalties, and/or imprisonment under the laws of your local jurisdiction.

DAMAGE

Immediately discontinue use of the product if the vaporizer unit is damaged in any way including but not limited to: dents, overheating, unusually restrictive airflow, and/or electrical malfunctions. Do not attempt to repair product by disassembly of non replaceable parts except Mouthpiece, Filter,

Packing Tool, Removable Battery. Please contact customer service for help with any damaged unit.

If the device or battery begins to feel abnormally hot, immediately discontinue use and turn off unit. Allow device to cool in a safe, non-flammable environment. Do not approach device for at least 2 hours. Do not attempt to repair product on your own.

Never crush, dent, or tamper with batteries. Never throw batteries into a fire. Dispose of batteries per your local safety regulations.

WARNING

THIS PRODUCT IS NOT INTENDED FOR NICOTINE. PRODUCT IS DESIGNED FOR LEGAL BOTANICALS AND CONCENTRATE USE ONLY. PRODUCT DOES NOT CONTAIN ANY BOTANICALS OR CONCENTRATE MATERIALS. KEEP DEVICE AWAY FROM CHILDREN AND PETS.

Please do not store this product for extended period with a low charge. If the battery falls below 2% permanent damage to the battery may occur preventing charging of the battery.

8. LIMITED WARRANTY

The product is warranted for a period of eighteen (18) months from purchase with receipt or eighteen (18) months from date of manufacture without receipt against defects in manufacturing, workmanship, and materials. This device is designed for the use of legal herb and concentrates only. Any use of the XVAPE FOG with illegal substances will void the warranty.

The warranty does not apply to damage caused by accident, abuse, misuse, natural disaster, user error, or use outside the intended use described in the manual. Use outside the intended use as described in this manual also includes any tampering with device in any way including but not limited to modification to alter functionality or modification to alter appearance.

The warranty also does not apply to cosmetic damage including but not limited to dents, scratches/chips to finish, and/or broken plastic parts.

Normal product wear and tear is not covered under warranty. Normal performance degradation of batteries is also not covered by the warranty.

To make a warranty claim, please contact customer support at support@topgreentech.com. The original bill of sale, authenticity code, pictures or videos, and any serial numbers are required to redeem the warranty.

At the manufacturer's discretion, warranty service will be provided by repair of the product or exchange of the product and/or part with a new or functionally equivalent product/part.

9. CUSTOMER SUPPORT

For any question or concerns with the product, its use or defects, please contact customer support at support@topgreentech.com. We will do our best to provide a response within two (2) business days after receipt of written notice.

www.topgreen-tech.com

© Topgreen Technology 2019



English